

Keystone**KeyGuide®**

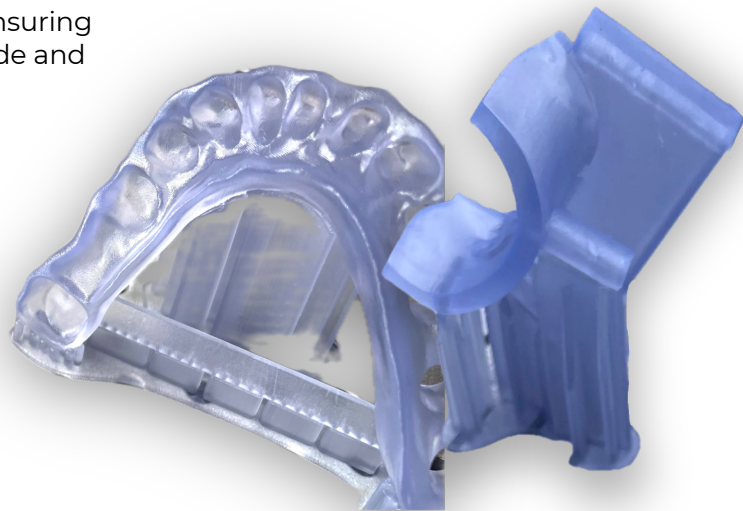
KeyGuide is a clear, stiff, durable, and biocompatible (class I) light curing resin designed for 3D printing highly accurate surgical guides. It's indicated for intra-oral use in guided dental implant surgery and for placing implants at a precise angle and depth by a dental professional. This material can withstand the forces of guided surgery in the oral cavity.

Features

- Biocompatible capable per ISO10993-5 and ISO10993-10
- Autoclave sterilizable
- High strength and stiffness for withstanding typical forces during use
- Clear and durable
- Exceptional accuracy ensuring consistent fit of the guide and sleeves

Applications

- Surgical guides

**Ultimate Flexural Strength**

106 MPa

Flexural Modulus

2400 MPa

Elongation at Break

6.3 %

Shore Hardness

95 D

[Technical Data Sheet](#)[Safety Data Sheet](#)