

## Spot-A

# S-Pro Engineering

This material is a light curing resin designed for prototyping and enclosure design. This material delivers high resolution, is fast and easy to print, and maintains high dimensional stability.

### Features

- High resolution and performance
- Great thermal resilience properties
- Maintains high dimensional stability
- Ensures minimal shrinkage
- Smooth surface finish

### Applications

- High speed prototyping
- Enclosure design
- Parts that need machining

### Solid Part Density

1.1 g/cc

### Ultimate Tensile Strength

30 MPa

### Tensile Modulus

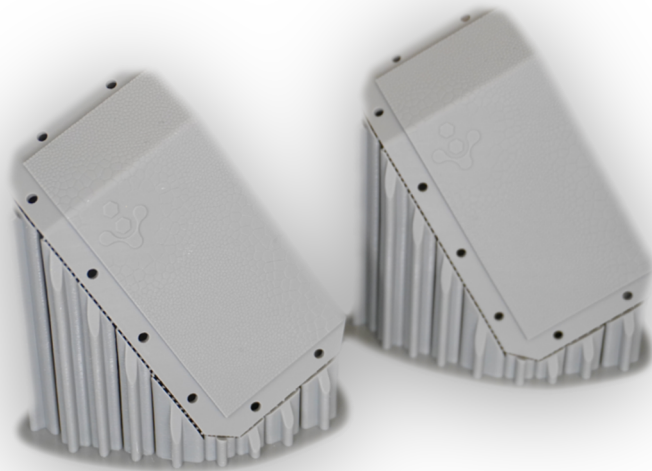
1681 MPa

### Elongation at Break

2.5 %

### Shore Hardness

85 D



[Technical Data Sheet](#)



[Safety Data Sheet](#)

